



AXIOM®+

HIGH-PERFORMANCE MULTIFUNCTION NAVIGATION DISPLAYS



Raymarine®





A NEW GENERATION OF HIGH-PERFORMANCE MULTIFUNCTION NAVIGATION DISPLAYS

The performance-tuned Axiom Plus is a new generation of award-winning Raymarine multifunction displays. Optimised for speed, Axiom Plus is equipped with a powerful quad-core processor for industry-leading responsiveness and speed, giving you the power to seamlessly redraw charts, navigate with augmented reality, and experience RealVision™ 3D sonar. New, higher resolution IPS displays deliver 25 percent more brightness and new day/night colour palettes offer enhanced visibility in any lighting condition. Axiom Plus features the renowned LightHouse 3 OS, the most powerful and easy-to-use Raymarine MFD operating system to date.





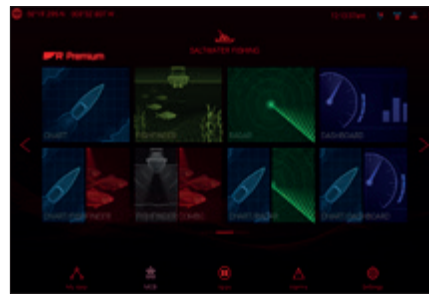
PERFORMANCE TUNED

Designed for speed, responsiveness, and future expansion.



FAST AND FLUID

Fluid and fast chart redraw of new Raymarine LightHouse Charts, plus Navionics and C-MAP.



LIGHTHOUSE 3 OS

Smart and intuitive LightHouse 3 OS makes navigating easy.



QUAD-CORE POWER

Powerful quad-core processor, plus increased onboard storage for personal data and apps.



AUGMENTED REALITY

ClearCruise™ Augmented Reality-capable for smarter navigation decisions.





NEW LIGHTHOUSE CHARTS

Ready-to-explore with new Raymarine LightHouse Charts, featuring dynamic viewing options, premium points of interest, and detailed satellite imagery.



Information rich, leisure chart view



Professional government chart view

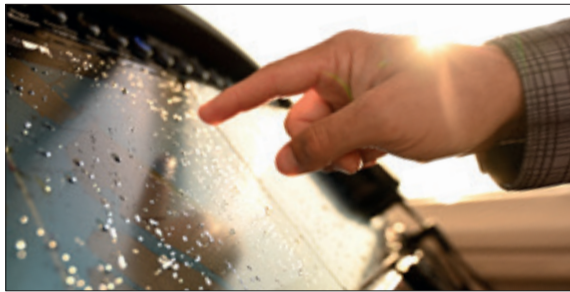


Mapbox® Aerial Satellite Overlays with a LightHouse Premium subscription



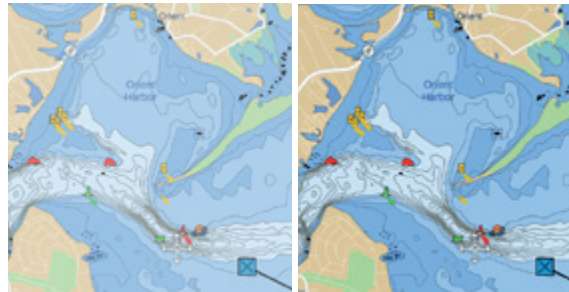
MAXIMUM VISIBILITY

Upgraded IPS display technology delivers charts, sonar, radar, and video in stunning colour.



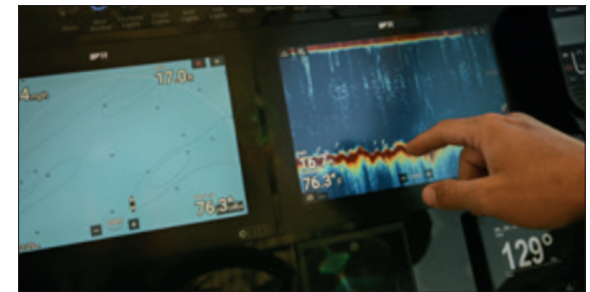
HYDROTOUGH™ DISPLAY

Nano-coated, impact-resistant glass screen repels water, oil, and smudges for better viewing and accurate touch controls.



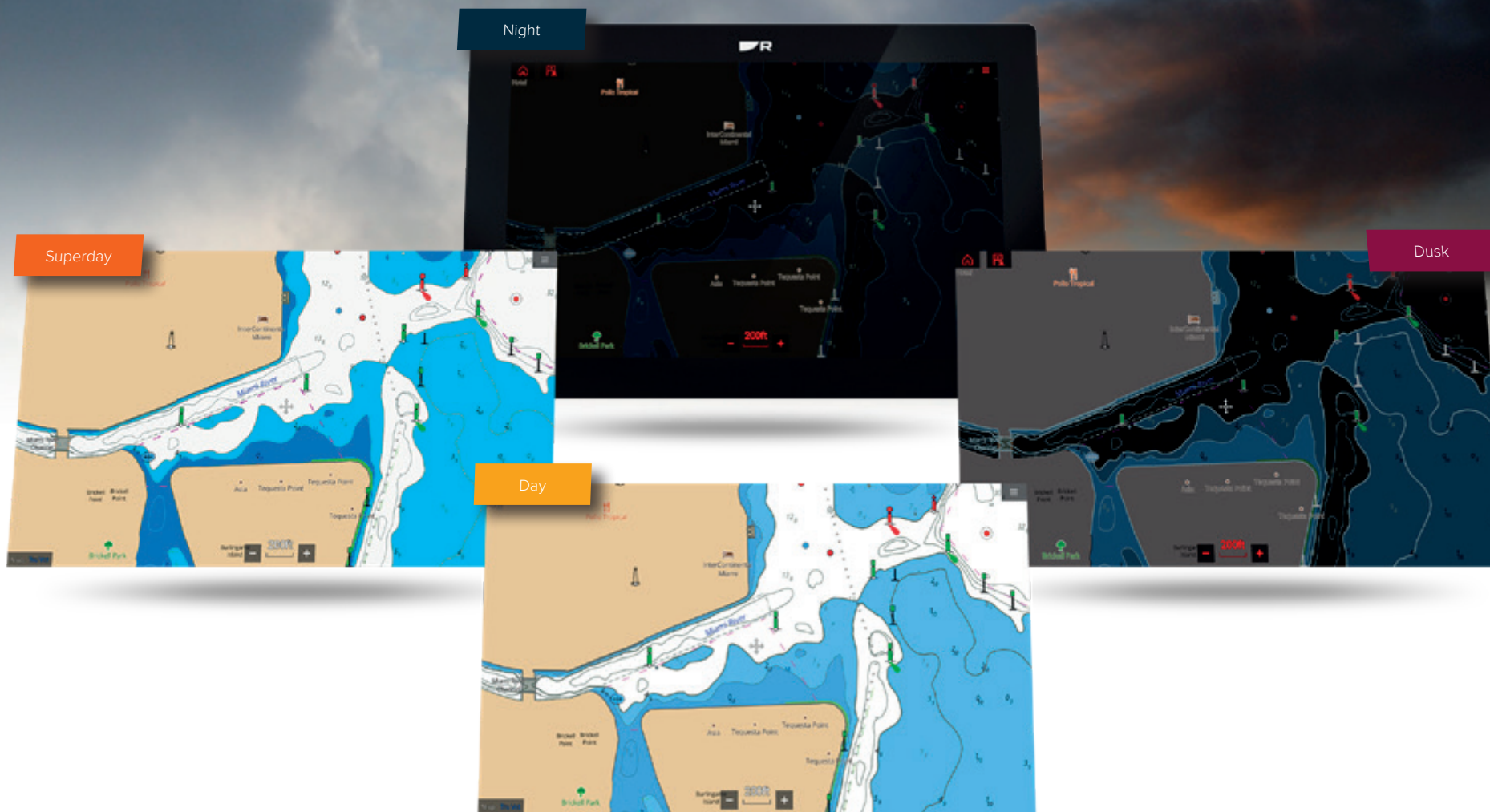
BRIGHTER

7, 9, and 12 inch all-weather displays are 25 percent brighter (up to 1,800 nits).



SHARPER

IPS display technology delivers wider viewing angles and sharp contrast at twice the resolution of traditional displays.



Improved viewing with new LightHouse colour themes, including Day, Super Day, Dusk, and Night mode



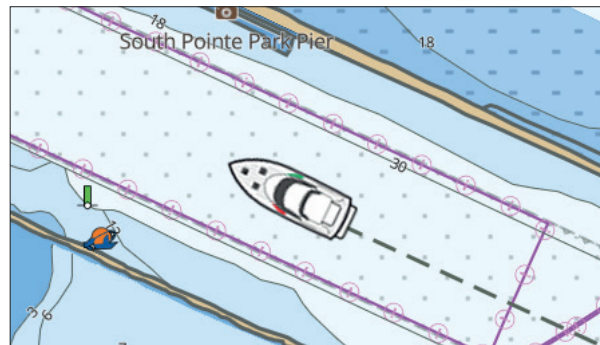
SIMPLY POWERFUL

Better chart plotting, enhanced GPS, and 3D sonar.



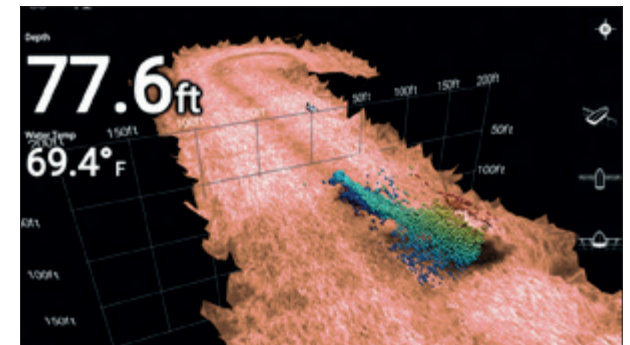
READY TO EXPAND

Network with multiple Axiom displays, radars, sonar, and more.



ENHANCED GPS

Next-generation, high-performance 10 Hz GPS/GNSS receiver with 4X increased sensitivity for accurate positioning



3D SONAR BUILT-IN

Available with built-in RealVision 3D sonar for the most comprehensive view of the underwater world.



KEY AXIOM + SPECIFICATIONS

	AXIOM + 7	AXIOM + 9	AXIOM + 12
Display size	7.0 inch High Density IPS	9.0 inch High Density IPS	12.1 inch High Density IPS
Display Resolution	1024 x 600 (WSVGA)	1280 x 720	1280 x 800 (WXGA)
Display Type	Multitouch with NanoTough™ rugged hydrophobic coating		
Brightness	up to 1,500 nits		up to 1,800 nits
Viewing Angle	85° top, bottom, left, right		88° top, bottom, left, right
Dimensions	210 x 142 x 77mm / 7.92" x 5.24" x 3.00"	244 x 158 x 77mm / 9.65" x 6.22" x 3.00"	314 x 217 x 77mm / 12.36" x 8.54" x 3.00"
Weight	3 lbs	5 lbs	6.5 lbs
Mounting	Top, Flush, Front, Bracket		
Waterproof Rating	IPx6 and IPx7		
Operating Temperature	-25°C to + 55°C (-13°F to 131°F)		
Voltage	12V DC (8 V to 16 VDC)		
Connectivity and Ports	Transducer (RV models only), NMEA 2000 (DeviceNet) and SeaTalk NG via adapter, RayNet Ethernet, USB Micro B, MicroSD card reader, Wi-Fi (802.11/b/g/n) and Bluetooth V4.0		

Content Note

The technical and graphical information contained in this brochure, to the best of our knowledge, was correct as it went to press. However, the Raymarine policy of continuous improvement and updating may change product specifications without prior notice. Therefore, unavoidable differences between the product and this brochure may occur from time to time, for which liability cannot be accepted by Raymarine.

Some images in this brochure have been used for illustration purposes only.

Photography:

Dufour; Galeon; Boston Whaler;
Jason Arnold;

FLIR Maritime Belgium Bvba

Luxemburgstraat 2,
2321 Meer,
Belgium
T: (+32) (0) 3665 5162

Raymarine UK Limited

Marine House
Cartwright Drive, Fareham, PO15 5RJ,
United Kingdom
T: (+44) (0)1329 246 700

FLIR Maritime US Inc.

9 Townsend West
Nashua NH 03063
United States of America
T: (+1) 603-324-7900

FLIR Maritime Asia Pty Ltd

Suite 1.01, 26 Rodborough Road
Frenchs Forest, NSW, 2086,
Australia
T: (+61) (0) 2 8977 0300

Raymarine Benelux

Florijnweg 21G,
6883 JN VELD
Nederland
T: (+31) 26 361 4242

Raymarine Denmark

Centervej 7
4600 Køge
Denmark
T: (+45) 4371 6464

Raymarine Finland Oy

Suomalaiistentie 1-3
02270 Espoo
Finland
T: (+358) 207619937

Raymarine France

Parc d'Activités des Peupliers
37 Rue des Peupliers, CS 50007
92752 Nanterre Cedex - France
T: (+33) 146497230

Raymarine Germany GmbH

Borsteler Chaussee 53,
22453 Hamburg,
Germany
T: (+49) 40 237 8080

Raymarine Italy Srl

Via L. Manara 2,
20812 Limbiate (MB),
Italy
T: (+39) (0)2 99451001

Raymarine Norway

Stasjonsveien 19
1580, Rygge,
Norge
T: (+47) 69 26 46 00

Raymarine Sweden AB

Bolshedens Industriväg 18,
427 50 Billdal,
Sweden
T: (+46) 317 633670