



AXIOM 2 PRO S

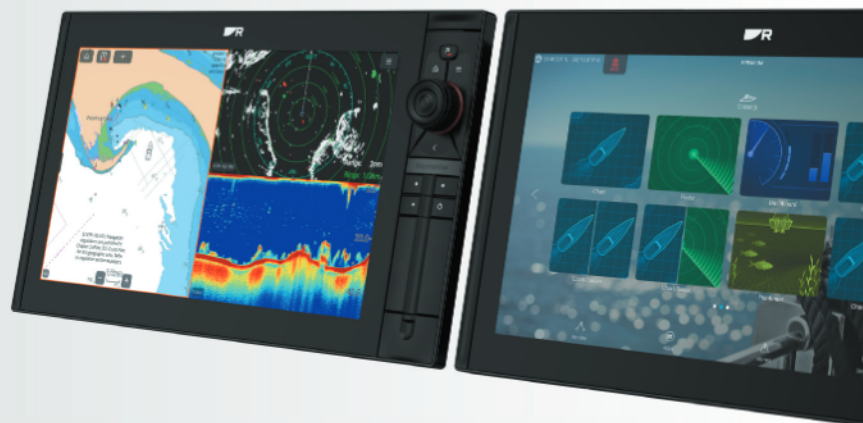
HIGH PERFORMANCE NETWORK CHARTPLOTTERS

Axiom 2 Pro combines chartplotter, sonar, radar, autopilot, and video into a powerful all-in-one navigation system. With Axiom 2 Pro, you can navigate smarter and expand your system, thanks to the super intuitive LightHouse operating system. Plan your next trip and get underway confidently with Axiom 2 Pro's HybridTouch™ — a simple touchscreen and keypad experience. Axiom 2 Pro S chartplotters feature built-in single channel High CHIRP sonar- the ideal sonar solution for reliable depth sounding and underwater exploration. Available in 9, 12 or 16 inch display sizes, Axiom Pro 2 is the perfect cruising companion.



AXIOM 2 PRO KEY FEATURES

- Get underway faster with a fast 6-core processor
- HydroTough™ nano-coating repels water for reliable touchscreen control and superior sunlight visibility
- Confident HybridTouch™ control plus an interchangeable autopilot keypad or user-programmable soft keys
- Integrated High CHIRP sonar with transom, in-hull and low-profile through-hull CPT-S series transducer options
- Smart backlighting and an ambient light sensor automatically adjusts display brightness for day and evening
- Create your own Axiom 2 Pro system with multiple networked Axiom displays
- Stay entertained with streaming Apps and Axiom 2 Pro's HDMI and audio output for remote displays and marine entertainment systems



Raymarine®

AXIOM 2 PRO SPECIFICATIONS

POWER SPECIFICATION	
Power consumption @ 12 V dc	Axiom 2 Pro 9: 24.96 W / Axiom 2 Pro 12: 21.12 W / Axiom 2 Pro 16: 31.44 W
Power consumption @ 24 V dc	Axiom 2 Pro 9: 25.2 W / Axiom 2 Pro 12: 22.56 W / Axiom 2 Pro 16: 31.68 W
Nominal supply voltage	12 V dc / 24 V dc
ENVIRONMENTAL SPECIFICATION	
Waterproof rating	IPx6, IPx7
PHYSICAL SPECIFICATION	
Size (diagonal)	Axiom 2 Pro 9: 9.0 in / Axiom 2 Pro 12: 12.1 in / Axiom 2 Pro 16: 15.6 in
Dimensions H x W x D (Trunnion mounted)	<ul style="list-style-type: none"> Axiom 2 Pro 9: 186.2 mm (7.33 in) x 329.5 mm (12.97 in) x (234.9 mm (9.25 in) including cables Axiom 2 Pro 12: 246.13 mm (9.69 in) x 388.5 mm (15.3 in) x 233.4 mm (9.18 in) including cables
Dimensions H x W x D (Trunnion mounted)	<ul style="list-style-type: none"> Axiom 2 Pro 9: 186.2 mm (7.33 in) x 329.5 mm (12.97 in) x (234.9 mm (9.25 in) including cables Axiom 2 Pro 12: 246.13 mm (9.69 in) x 388.5 mm (15.3 in) x 233.4 mm (9.18 in) including cables
CONNECTIONS	
Digital Video & Audio Out Connection	HDMI Out Micro connector type D'
External GPS Antenna Connection	TNC connector
Accessory connection	USB Micro B (rear – charging, external storage device or RCR-SD/USB Accessory (A80440)
Ethernet connection	RayNet (10/100/1,000 Mbits/s) x2
External storage	MicroSDXC card slot x2 (front)
NMEA 2000 connection	DeviceNet connector
Analog video connections	BNC Analog video input (on power cable)
Wireless connections	Bluetooth: V4.0, Wi-Fi: 802.11/b/g/n
Transducer connection	25 pin RealVision type connector (requires adaptor cable)
Audio connections	Left and Right RCA connectors via Power/Video/Audio cable
GPS	
GNSS compatibility	GPS, Galileo, GLONASS, Beidou
SONAR	
Channels	CHIRP conical sonar
Depth range	0.6 m (2 ft) to 274 m (900 ft) Depending on water conditions
LIGHTING	
Illumination	Axiom 2 Pro 9 1300 nits / 1300 cd/m ² Axiom 2 Pro 12 & 16 1200 nits / 1200 cd/m ²
STORAGE	
Internal storage	64 GB Solid State

For further information go to our website
www.raymarine.com

DECEMBER 2022