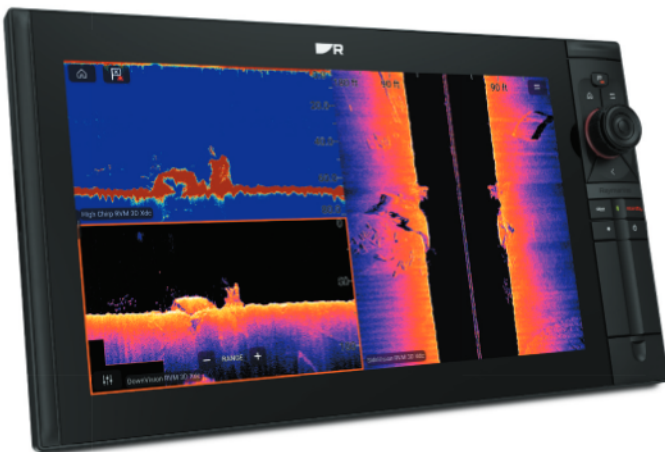




AXIOM 2 PRO RVM

HIGH PERFORMANCE NETWORK CHARTPLOTTERS WITH REALVISION MAX

Axiom 2 Pro combines chartplotter, sonar, radar, autopilot, and video into a powerful all-in-one navigation system. With Axiom 2 Pro, you can navigate smarter and expand your system, thanks to the super intuitive LightHouse operating system. Plan your next trip and get underway confidently with Axiom 2 Pro's HybridTouch™ — a simple touchscreen and keypad experience. Axiom 2 Pro RVM chartplotters feature built-in wide-spectrum CHIRP with RealVision MAX technology. RealVision MAX ups your fish-finding game with DownVision, SideVision, and 3D sonar upgraded with increased range, better resolution, and sharper fish targets



AXIOM 2 PRO KEY FEATURES

- Get underway faster with a fast 6-core processor
- HydroTough™ nano-coating repels water for reliable touchscreen control and superior sunlight visibility
- Confident HybridTouch™ control plus an interchangeable autopilot keypad or user-programmable soft keys
- Find more fish with built-in RealVision MAX CHIRP and dual channel 1kW CHIRP sonar
- Smart backlighting and an ambient light sensor automatically adjusts display brightness for day and evening
- Create your own Axiom 2 Pro system with multiple networked Axiom displays
- Stay entertained with streaming Apps and Axiom 2 Pro's HDMI and audio output for remote displays and marine entertainment systems



Raymarine®

AXIOM 2 PRO RVM SPECIFICATIONS

POWER SPECIFICATION	
Power consumption @ 12 V dc	Axiom 2 Pro 9: 33.12 W / Axiom 2 Pro 12: 29.88 W / Axiom 2 Pro 16: 42.36 W
Power consumption @ 24 V dc	Axiom 2 Pro 9: 30.96 W / Axiom 2 Pro 12: 28.8 W / Axiom 2 Pro 16: 40.8 W
Nominal supply voltage	12 V dc / 24 V dc
ENVIRONMENTAL SPECIFICATION	
Waterproof rating	IPx6, IPx7
PHYSICAL SPECIFICATION	
Size (diagonal)	Axiom 2 Pro 9: 9.0 in / Axiom 2 Pro 12: 12.1 in / Axiom 2 Pro 16: 15.6 in
Dimensions H x W x D (Trunnion mounted)	<ul style="list-style-type: none"> Axiom 2 Pro 9: 186.2 mm (7.33 in) x 329.5 mm (12.97 in) x 234.9 mm (9.25 in) including cables Axiom 2 Pro 12: 246.13 mm (9.69 in) x 388.5 mm (15.3 in) x 233.4 mm (9.18 in) including cables
Dimensions H x W x D (Surface/Flush mounted)	<ul style="list-style-type: none"> Axiom 2 Pro 9: 173.79 mm (6.84 in) x 299.32 mm (11.78 in) x 234.9 mm (9.25 in) including cables Axiom 2 Pro 12: 222.8 mm (8.77 in) x 358.03 mm (14.1 in) x 233.4 mm (9.18 in) including cables Axiom 2 Pro 16: 258 mm (10.16 in) x 452.02 mm (17.8 in) x 240.4 mm (9.46 in) including cables
CONNECTIONS	
Digital Video & Audio Out Connection	HDMI Out Micro connector type D'
External GPS Antenna Connection	TNC connector
Accessory connection	USB Micro B (rear – charging, external storage device or RCR-SD/USB Accessory (A80440)
Ethernet connection	RayNet (10/100/1,000 Mbps/s) x2
External storage	MicroSDXC card slot x2 (front)
NMEA 2000 connection	DeviceNet connector
Analog video connections	BNC Analog video input (on power cable)
Wireless connections	Bluetooth: V4.0, Wi-Fi: 802.11/b/g/n
Transducer connection	25 pin RealVision type connector, 11 pin 1kW connector
Audio connections	Left and Right RCA connectors via Power/Video/Audio cable
GPS	
GNSS compatibility	GPS, Galileo, GLONASS, Beidou
SONAR	
Channels	<ul style="list-style-type: none"> 11 pin 1kW connector: 50 kHz Low CHIRP, 200 kHz High CHIRP 25 pin RealVision type connector: CHIRP conical sonar, DownVision, SideVision, RealVision 3D
Depth range	<p>25 pin RealVision type connector:</p> <ul style="list-style-type: none"> RVM High CHIRP = 365m (1,200ft) DownVision = 0.6m (2 ft) to 183m (600 ft) SideVision = 0.6m (2 ft) to 91.4 m (300 ft) RealVision Max 3D = 0.6m (2 ft) to 91.4m (300 ft) <p>11 pin 1kW connector:</p> <ul style="list-style-type: none"> 0.9 m (3 ft) to 914.4 m (3,000 ft) (In optimum conditions using a 1kW transducer)
LIGHTING	
Illumination	Axiom 2 Pro 9 1300 nits / 1300 cd/m ² Axiom 2 Pro 12 & 16 1200 nits / 1200 cd/m ²
STORAGE	
Internal storage	64 GB Solid State

For further information go to our website www.raymarine.com

DECEMBER 2022