

Scan here  
to save a copy



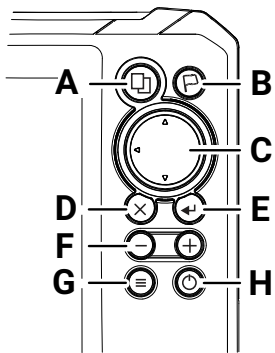
## EAGLE® Quick start guide

Lowrance® Eagle® multi-function display (MFD) is available in multiple sizes. This document describes the basic controls of the unit.

For the latest version of this document and the full operator manual, visit: [www.lowrance.com/downloads/eagle](http://www.lowrance.com/downloads/eagle).

→ **Note:** Refer to the enclosed Installation Manual before you turn on the unit.

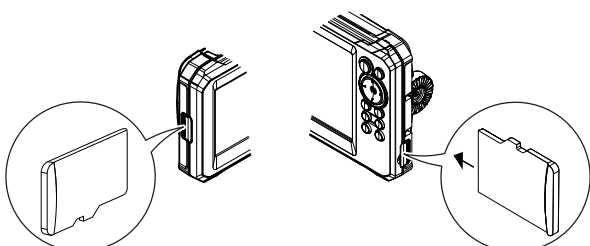
### Physical control keys



- A** Pages
  - Press to activate the home screen.
- B** Waypoint
  - Press to open the new waypoint dialog.
  - Press twice to save a waypoint.
  - Press and hold to access the find dialog.
- C** Arrows
  - On full screen pages:
    - Press to position the cursor.
    - Press to pan the image in any direction.
  - On multi-panel pages:
    - Press to select a panel.
  - On menus:
    - Press to navigate.
- D** Exit
  - On a maximized, multi-panel page:
    - Press to return to the multi-panel page.
  - In menus and dialogs:
    - Press to return to the previous menu level and to exit a dialog.
- E** Enter
  - On multi-panel pages:
    - Press to maximize the current selected panel.
  - In menus and dialogs:
    - Press to confirm a selection.
- F** Zoom
  - Press to zoom the image.
  - Press both keys together to create a MOB (Crew Overboard) waypoint at your position.
- G** Menu
  - Press to display the menu on full screen pages.
- H** Power
  - Press once to display the **System Controls** dialog.
  - Press and hold to power the unit on /off.
  - Repeat short presses to cycle the backlight brightness.

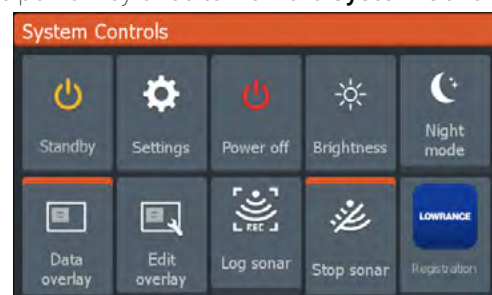
### Card reader

Carefully slide a microSD® into the card reader slot on the side of the device. To remove the microSD® card, gently pull the card.



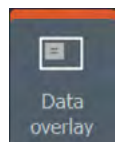
### System controls

Press the power key once to view the **System Controls** dialog.

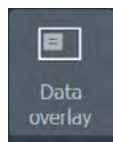


→ **Note:** The content of the **System Controls** dialog depends on connected equipment and the active panel.

Active options are orange in the **System Controls** dialog.



Option ON



Option OFF

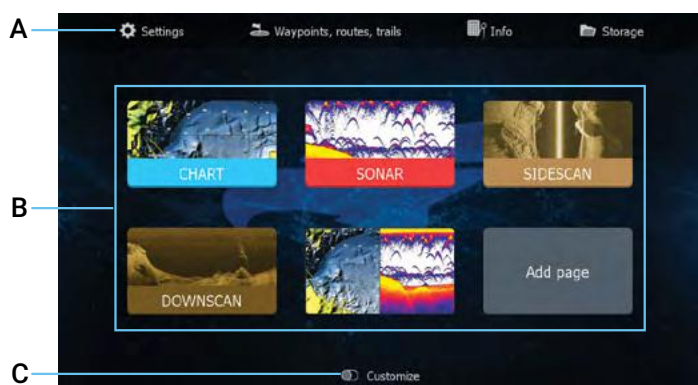
## Display illumination

Set brightness and select day/night mode from the **System Controls** dialog.

Cycle backlight brightness levels by repeatedly pressing the power key.

## Home screen

Press the pages key to view the home screen.



**A** Tools — Select to access dialogs used for carrying out a task or for browsing stored information.

**B** Application icons — Select to display an application.

**C** Customize — Activate customize mode to modify or delete custom pages.

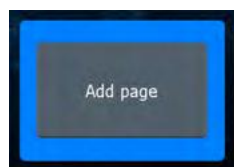
→ **Note:** Application icons on the home screen vary with MFD features.

## Pages

You can display an application page by selecting its icon on the home screen.

### Custom pages

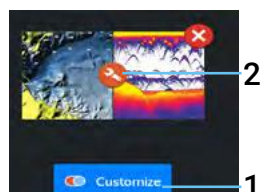
The system is delivered with one predefined custom page, and you can also create your own.



Select the **Add Page** icon to create a custom page.

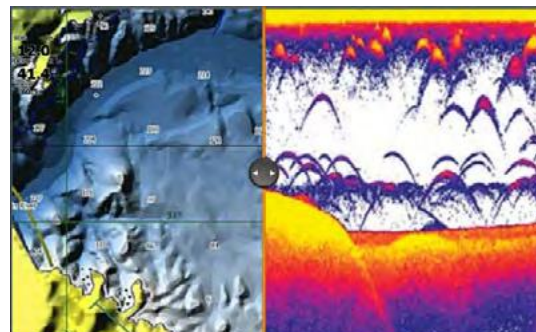
1 Switch ON **Customize** to edit existing custom pages.

2 Select the custom page to edit.



## Multi-panel pages

- The active panel is indicated by an orange border.
- Press the arrow keys to change active panels.
- Press the enter key to maximize the active panel. Press the exit key to return to the multi-panel page.
- Select the **Adjust splits** option in the **System Controls** dialog, and use the arrow keys to change the panel size. Confirm the layout by pressing the menu or enter key.

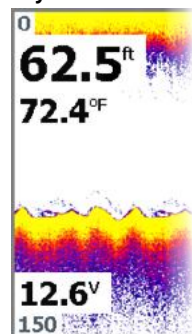
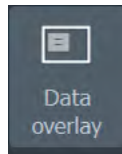


→ **Note:** The panel menu is available on maximized panels.

## Data overlay

You can display information as a data overlay on chart and sonar pages. The information is set individually for each default and custom page.

Turn **Data overlay** ON or OFF from the **System Controls** dialog.



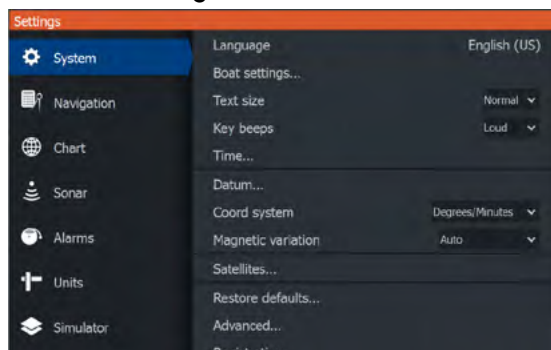
To change the data overlay position or information:

- 1 Select the **Edit overlay** option in the **System Controls** dialog to activate edit mode.
- 2 Press the menu key to display edit options.
- 3 Press the exit key to save your changes.

## Settings

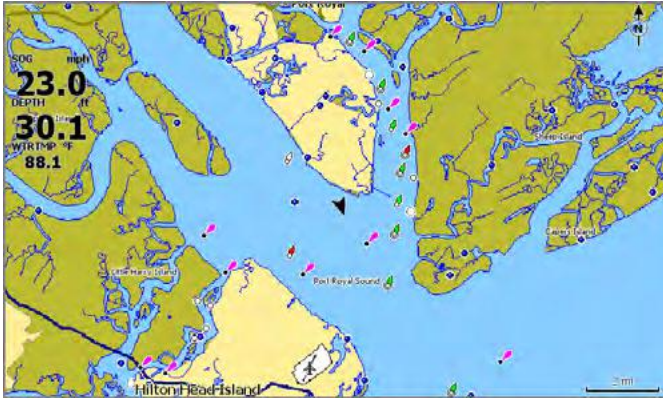
There are two ways to view the **Settings** screen:

- Select **Settings** on the **System Controls** dialog, or
- Select **Settings** on the home screen.



## Chart

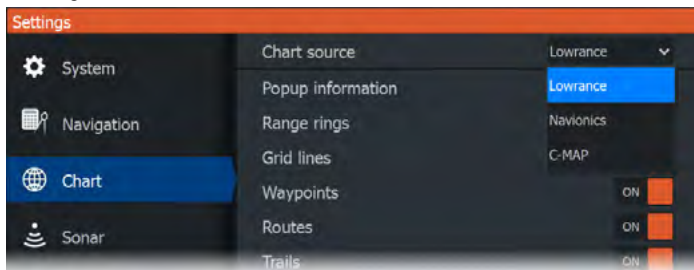
Use the chart page to navigate to a waypoint, create a route, or track your current course.



- Use the zoom and arrow keys to adjust the chart scale and location.
- Position the cursor and press the enter key to select a chart item and activate the detailed information dialog.

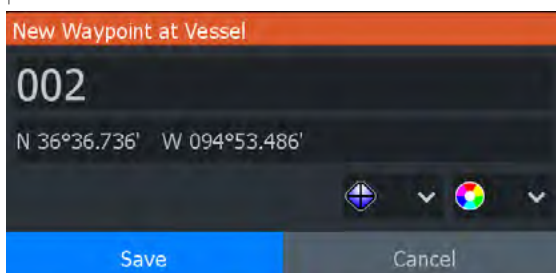
## Chart source

Change the chart source if a chart card is inserted.

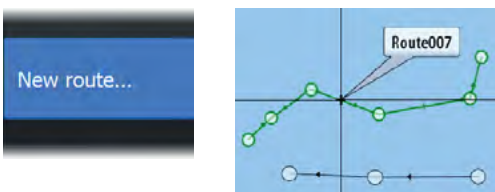


## Waypoints

Press the waypoint key to save a waypoint. By default, the waypoint is placed at the vessel's position. With an active cursor, the waypoint is placed at the selected cursor position.



## Routes



To create a route:

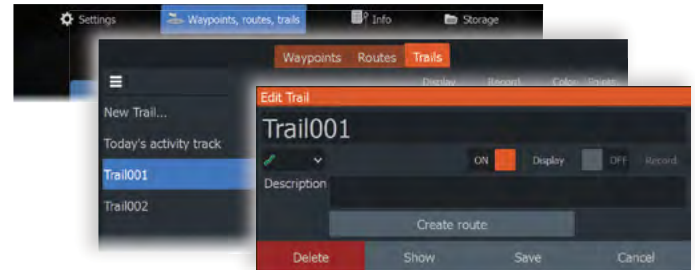
- 1 Activate a full screen chart panel.
- 2 Press the menu key to activate the panel menu, then select the **New route** option in the menu.
- 3 Use the arrow keys to position the first route point, then press the enter key to confirm the position.
- 4 Repeat the previous step to place additional route points.
- 5 Press the exit key to save the route.

## Trails

Your unit automatically tracks and draws the vessel's movement on the chart panel. Trails are managed from the **Trails** dialog.

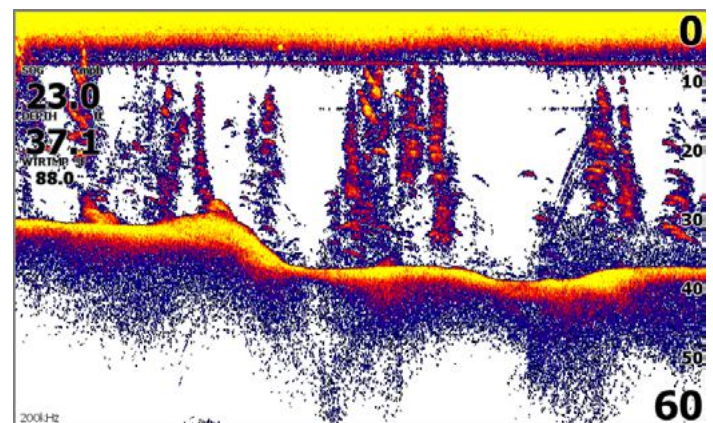
To display the **Trails** dialog:

- 1 Select **Waypoints, Routes, Trails** from the home screen.
- 2 Select the **Trails** tab in the dialog.
- 3 Select the trail you want to edit.



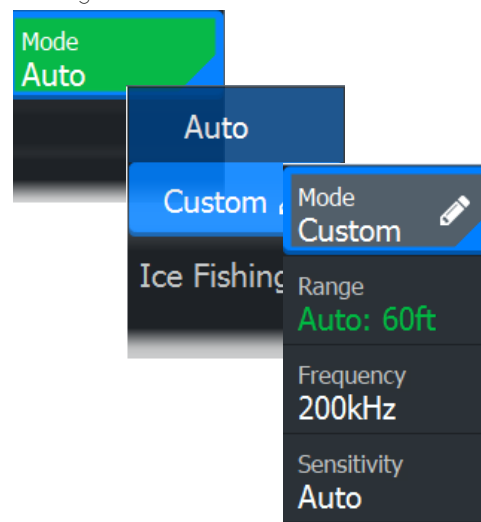
## Sonar

The sonar application displays an image of the water and sea floor beneath your vessel, allowing you to detect fish and examine the structure of the seafloor.



- Use the zoom keys to zoom view different parts of the water column.
- Use the arrow keys to position the cursor and pan the image.

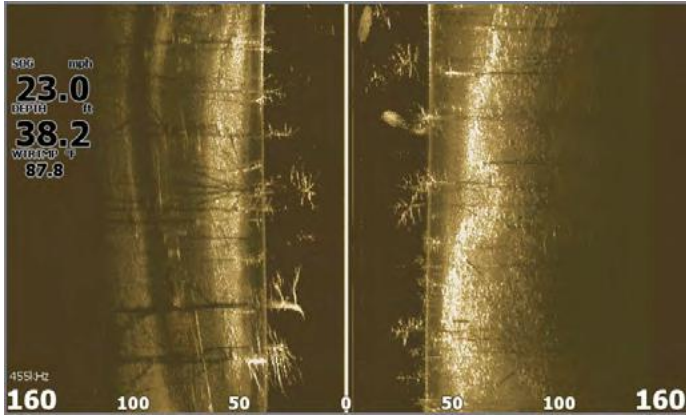
By default, your unit is set to **Auto** mode, and all settings are automated. Select **Auto** in the panel menu and change to **Custom** or **Ice Fishing** mode to customize the sonar settings.





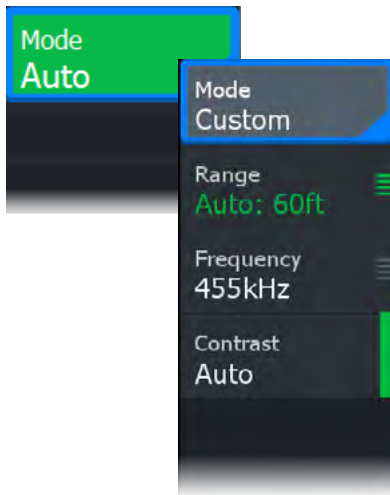
## SideScan

SideScan provides a wide coverage in high detail of the seabed to the sides of your vessel. The SideScan application is available when a SideScan capable transducer is connected your unit.



- Use the zoom keys to zoom view different parts of the water column.
- Use the arrow keys to position the cursor and pan the image.

By default, your unit is set to **Auto** mode, and all settings are automated. Select **Auto** in the panel menu and change to **Custom** mode to customize the sonar settings.



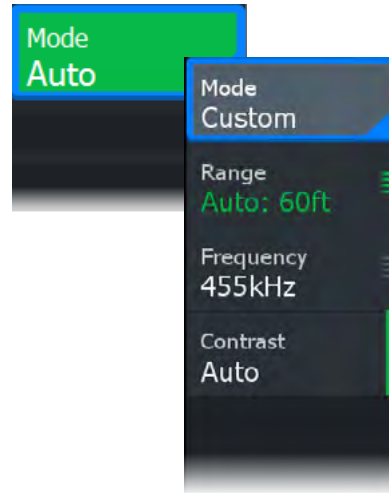
## DownScan

DownScan provides detailed images of structure and fish directly below your vessel. The DownScan application is available when a DownScan-capable transducer is connected to your unit.



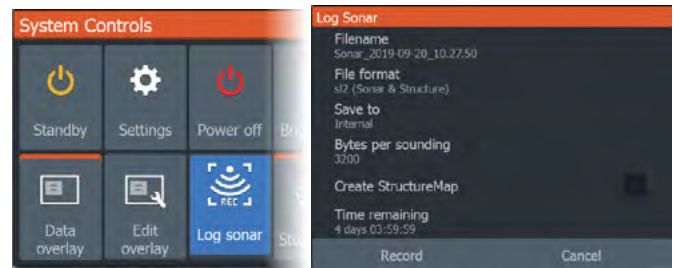
- Use the zoom keys to zoom view different parts of the water column.
- Use the arrow keys to position the cursor and pan the image.

By default, your unit is set to **Auto** mode, and all settings are automated. Select **Auto** in the panel menu and change to **Custom** mode to customize the sonar settings.

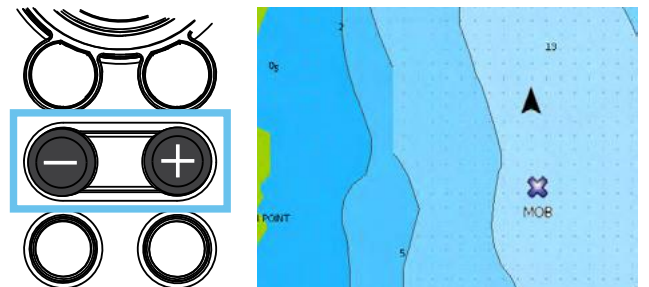


## Log Sonar

Activate the **Log Sonar** dialog from the **System Controls** or **Settings > Sonar** dialogs. Save the sonar log data internally or to a microSD® card.



## MOB waypoint



Activate a crew overboard (MOB) waypoint by pressing both + and - keys simultaneously. The display shows navigation information to the MOB waypoint.

©Reg. U.S. Pat. & Trm. Off, and ™ common law marks.

Visit [www.navico.com/intellectual-property](http://www.navico.com/intellectual-property) to review the global trademark rights and accreditations for Navico Group and other entities.

©2024 Navico Group. All Rights Reserved. Navico Group is a division of Brunswick Corporation.