



Printing a Mounting Template

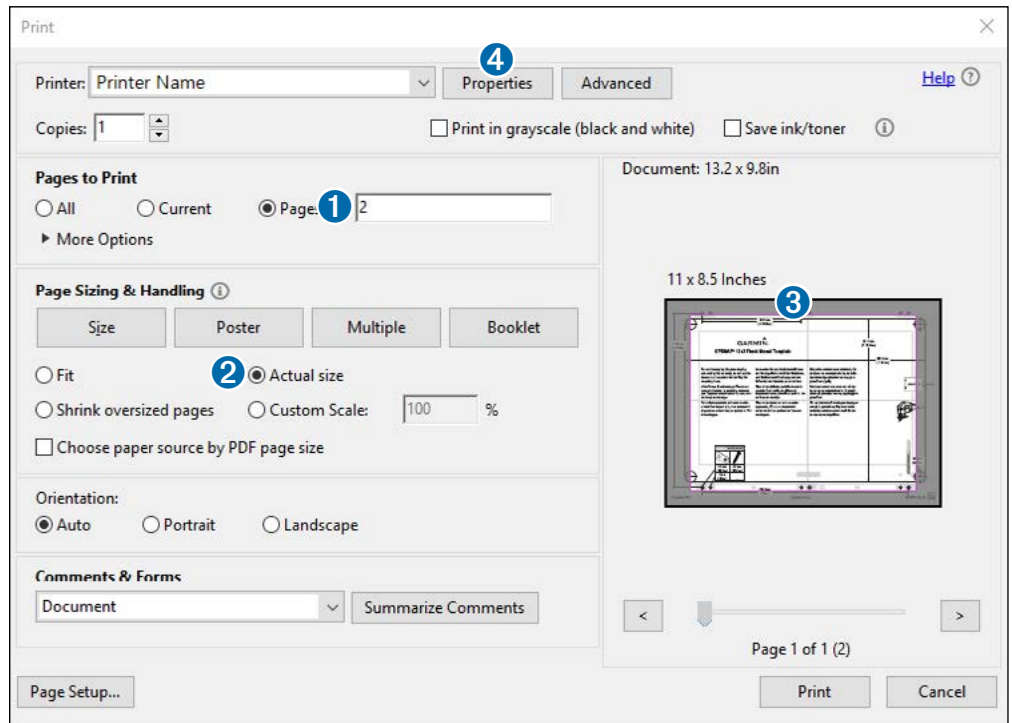
NOTICE

It is not recommended that you print a mounting template on your own. Use the template that came in the product box.

If you do print the template, you must follow these instructions for printing a mounting template precisely. To print large templates, you need large enough paper and printer. Failure to have the correct sized paper and printer, or a failure to follow these instructions, may result in an incorrectly sized template and therefore an incorrect cutout (too large or too small) on the mounting surface of your boat.

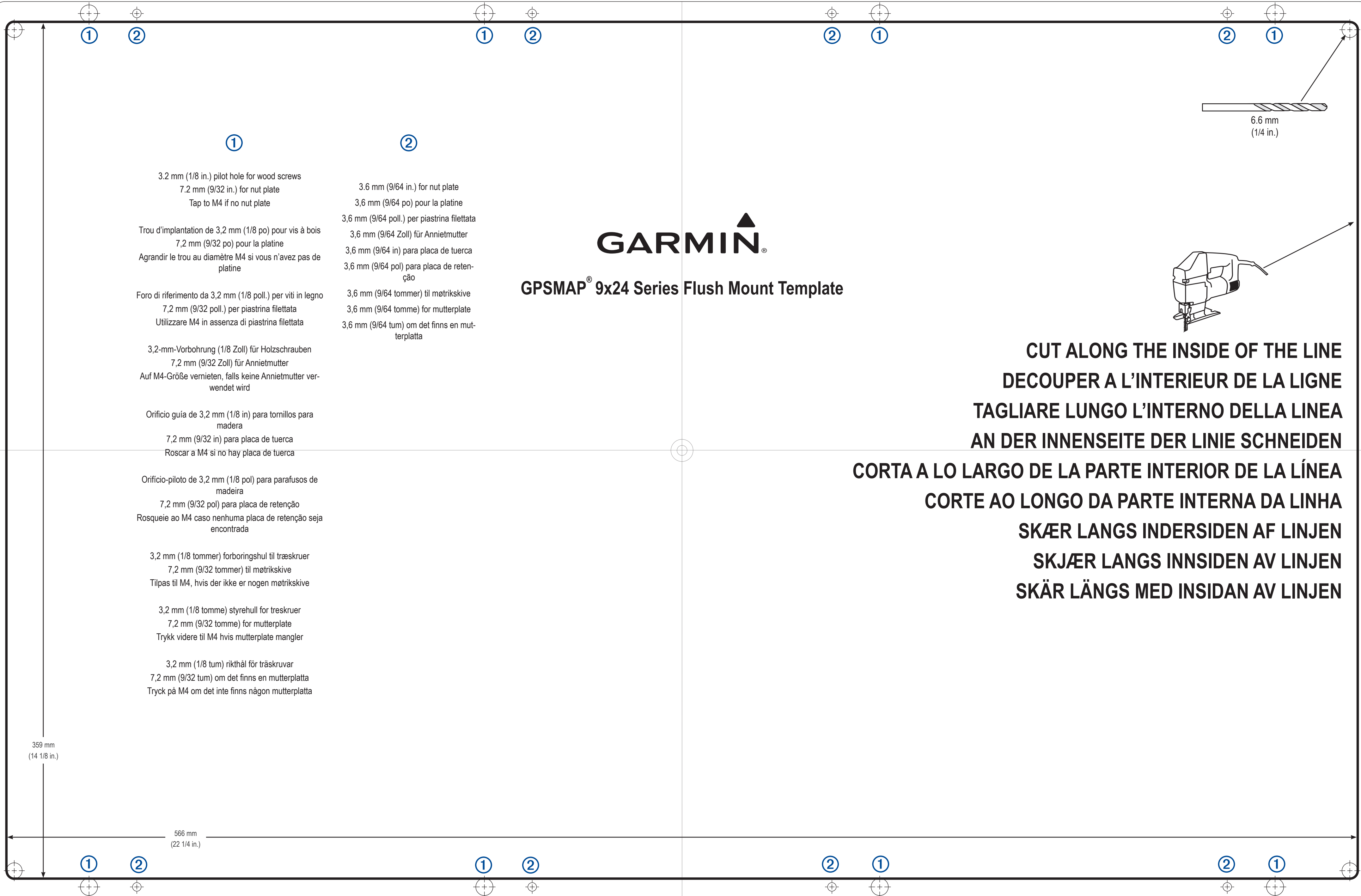
NOTE: The options and locations of the options differ between Adobe Acrobat versions and other PDF viewing/printing applications. Be sure the scaling is 100% before printing.

- 1 Select **File > Print**.
- 2 Enter **2** in **Pages to Print** ①.
- 3 Select **Actual Size** ② for **Page Sizing & Handling**.
- 4 Verify that the paper size is larger than the template ③.
In this example, the paper is not larger than the template.
- 5 If the paper size is not large enough, select **Properties** ④ and select a **Paper Size** that is larger than the template.
- 6 After printing the template, use a ruler to measure at least one dimension line to ensure the template printed to 100% scale.



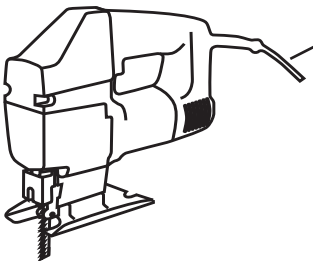
NOTICE

Garmin is not responsible for any damages or expenses resulting from a miscut mounting surface arising from a failure to follow these instructions.



GPSMAP® 9x24 Series Flush Mount Template

- | | |
|---|---|
| <p>①</p> <p>3.2 mm (1/8 in.) pilot hole for wood screws
7.2 mm (9/32 in.) for nut plate
Tap to M4 if no nut plate</p> <p>Trou d'implantation de 3,2 mm (1/8 po) pour vis à bois
7,2 mm (9/32 po) pour la platine
Agrandir le trou au diamètre M4 si vous n'avez pas de platine</p> <p>Foro di riferimento da 3,2 mm (1/8 poll.) per viti in legno
7,2 mm (9/32 poll.) per piastrina filettata
Utilizzare M4 in assenza di piastrina filettata</p> <p>3,2-mm-Vorbohrung (1/8 Zoll) für Holzschrauben
7,2 mm (9/32 Zoll) für Anniemutter
Auf M4-Größe vernieten, falls keine Anniemutter verwendet wird</p> <p>Orificio guía de 3,2 mm (1/8 in) para tornillos para madera
7,2 mm (9/32 in) para placa de tuerca
Roscar a M4 si no hay placa de tuerca</p> <p>Orificio-piloto de 3,2 mm (1/8 pol) para parafusos de madeira
7,2 mm (9/32 pol) para placa de retenção
Rosqueie ao M4 caso nenhuma placa de retenção seja encontrada</p> <p>3,2 mm (1/8 tommer) forboringshul til træskruer
7,2 mm (9/32 tommer) til møtrikskive
Tilpas til M4, hvis der ikke er nogen møtrikskive</p> <p>3,2 mm (1/8 tomme) styrehull for treskruer
7,2 mm (9/32 tomme) for mutterplate
Trykk videre til M4 hvis mutterplate mangler</p> <p>3,2 mm (1/8 tum) rikthål för träskruvar
7,2 mm (9/32 tum) om det finns en mutterplatta
Tryck på M4 om det inte finns någon mutterplatta</p> | <p>②</p> <p>3.6 mm (9/64 in.) for nut plate
3,6 mm (9/64 po) pour la platine
3,6 mm (9/64 poll.) per piastrina filettata
3,6 mm (9/64 Zoll) für Anniemutter
3,6 mm (9/64 in) para placa de tuerca
3,6 mm (9/64 pol) para placa de retenção
3,6 mm (9/64 tommer) til møtrikskive
3,6 mm (9/64 tomme) for mutterplate
3,6 mm (9/64 tum) om det finns en mutterplatta</p> |
|---|---|



**CUT ALONG THE INSIDE OF THE LINE
DECOUPER A L'INTERIEUR DE LA LIGNE
TAGLIARE LUNGO L'INTERNO DELLA LINEA
AN DER INNENSEITE DER LINIE SCHNEIDEN**

**CORTA A LO LARGO DE LA PARTE INTERIOR DE LA LÍNEA
CORTE AO LONGO DA PARTE INTERNA DA LINHA
SKÆR LANGS INDERSIDEN AF LINJEN
SKJÆR LANGS INNSIDEN AV LINJEN
SKÄR LÄNGS MED INSIDAN AV LINJEN**