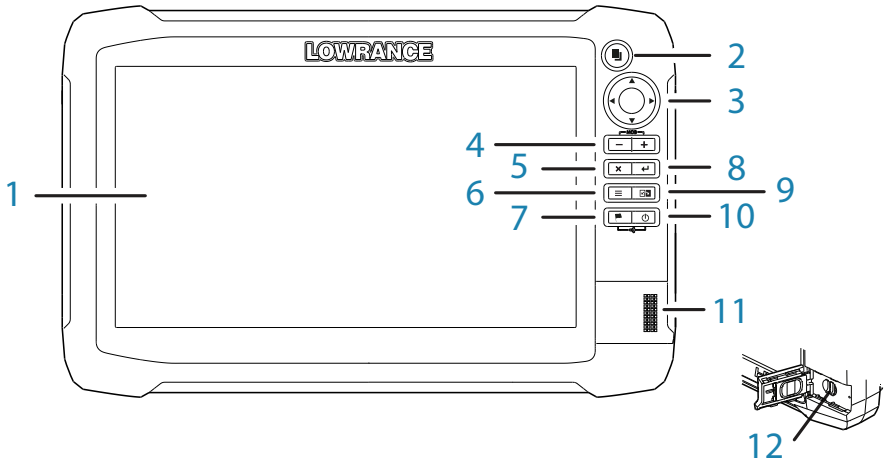


LOWRANCE® HDS Carbon

Quick Start Guide


EN

Overview




No.	Key	Function
1	Touchscreen	
2	Pages key	Activates the home page
3	Cursor keys	Pans the cursor, moves through menu items and adjusts values
4	Zoom out/ Zoom in keys	Zooms the screen; press keys simultaneously to save a Man Overboard (MOB) waypoint
5	Exit (X) key	Exits dialogs, returns user to the previous menu level and removes the cursor from the screen
6	Menu key	Activates the panel menu; press twice to access the Settings menu; press and hold to hide the panel menu
7	Waypoint key	Opens the new waypoint dialog; press twice to save a waypoint; press and hold to access the Find menu
8	Enter key	Confirms selections and saves settings
9	Panel key	Switches the active panel on a multiple-panel display; press and hold to expand the active panel to a full-page panel
10	Power key	Opens the System Controls dialog, adjusts the backlight level and powers the unit on/off
11	Card reader door	
12	microSD card readers	

Power key

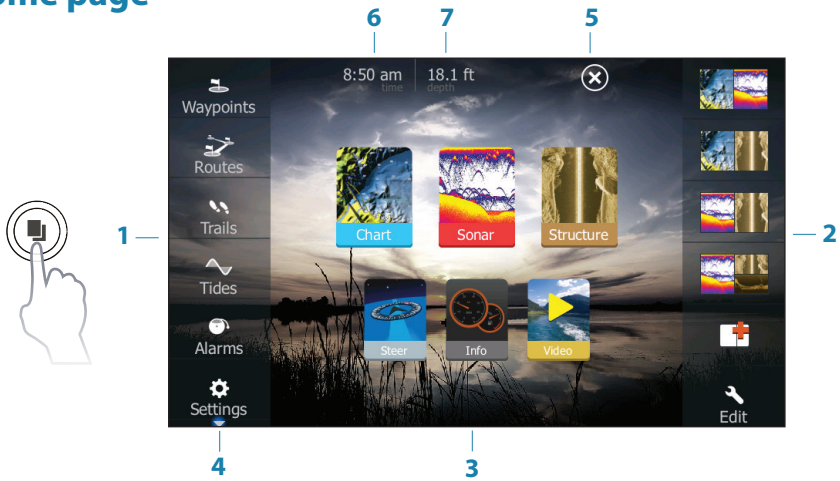
	<ul style="list-style-type: none"> • Press and hold: 	Powers the unit on/off
	<ul style="list-style-type: none"> • Single press: 	Opens the System Controls dialog
	<ul style="list-style-type: none"> • Repeated presses: 	Changes brightness level

System controls dialog



Function	Description
Settings	Opens the settings menu
Standby	Turns off the screen and switches unit into a low-power mode
Power off	Turns off unit
Brightness	Opens backlight adjustment slider
Night mode	Dims the backlight and displays a palette designed for low-light conditions
Touch lock	Disables the touchscreen
Adjust splits	Allows user to adjust panel size when multiple panels are displayed
Data overlay	Turns on/off data overlay display
Edit overlay	Allows editing of the size, position and content of overlay data

Home page

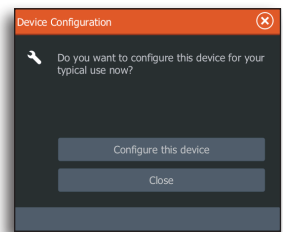


No.	Description
1	Tools panel. Select an icon to access menu options.
2	Favorites panel. You can display, create, edit and delete Favorite pages. Repeatedly tapping the Pages key will cycle through saved favorite pages.
3	Applications. Select an icon to view a page full screen. Press and hold an icon to view quick split page options.
4	Scroll up/down to view all menu items.
5	Select Exit to return to the previous active page.
6	Local time.
7	Water depth.

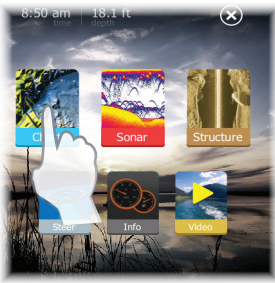
Device configuration

When you start up the unit for the first time, or after restoring defaults, the configuration dialog appears.

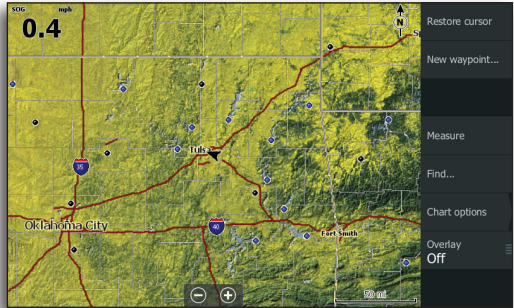
Select **Configure this device** to use the configuration wizard to configure the unit and other networked devices. Select **Close** to manually configure settings.



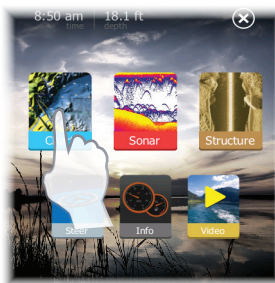
Selecting pages



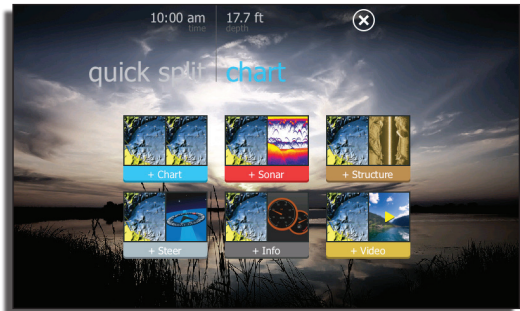
Tap the page icon



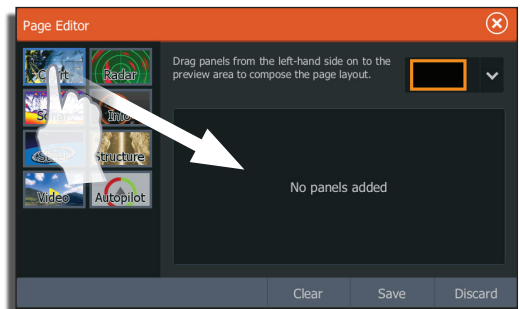
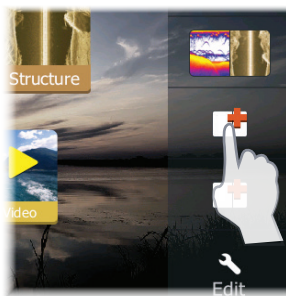
Accessing quick splitscreen pages (quick splits)



Press and hold the page icon



Customizing favorite pages

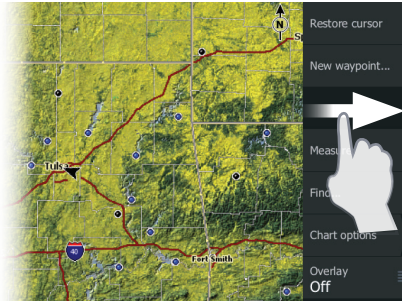


Several panel configurations are available:

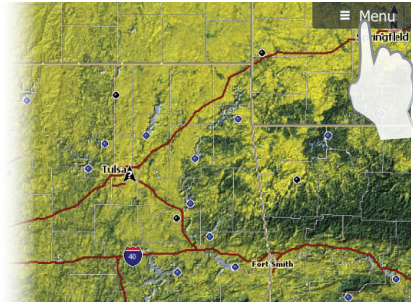


Menus

Hiding the page menu



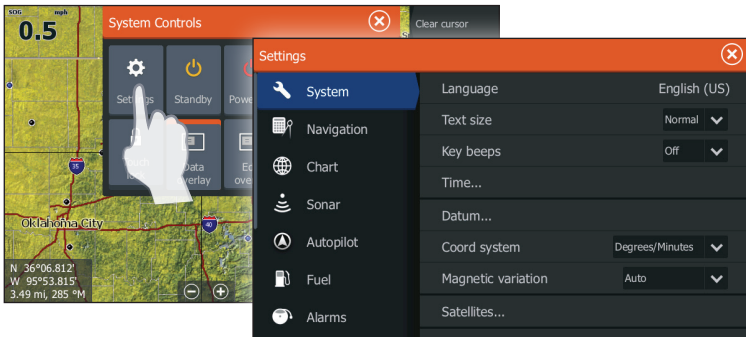
To hide a page menu, drag it to the right



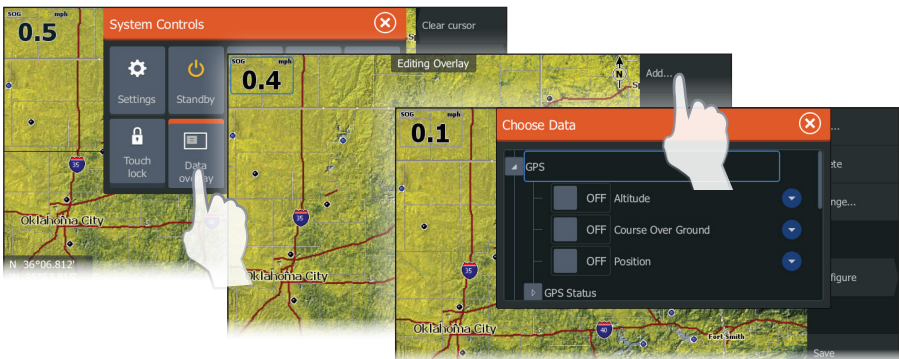
Restoring a page menu

→ **Note:** You can also press and hold the **Menu** key for three seconds to hide a page menu. The menu is restored by pressing the **Menu** key.

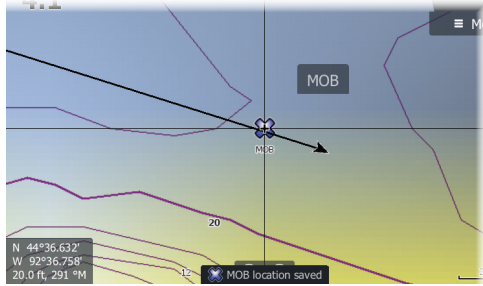
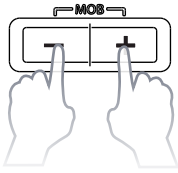
Settings menu



Data overlay

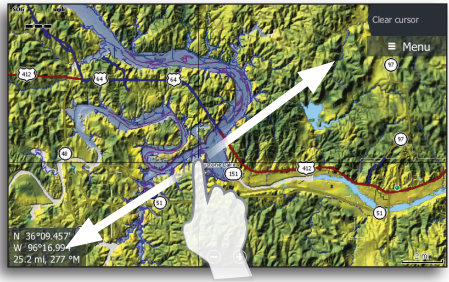


Saving a Man Overboard (MOB) waypoint

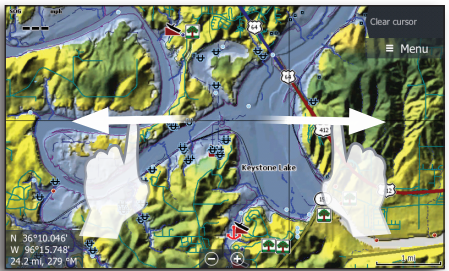


Using the cursor

Tap the screen or press the Cursor keys to activate the cursor. Drag your finger in any direction to pan the screen. Select **Clear Cursor** or press the **Exit** key to remove the cursor from the page.

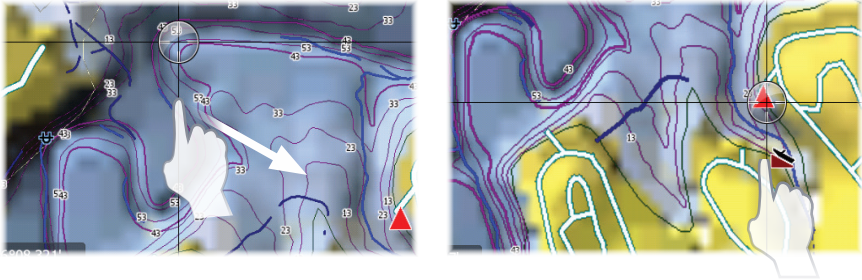


Multi-touch zooming



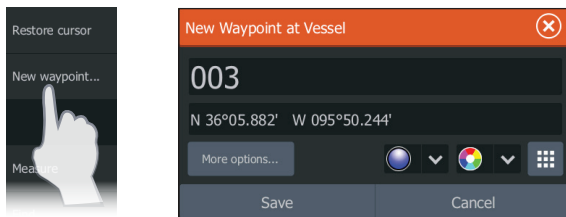
Cursor assist mode

Press and hold your finger on the screen to switch the cursor to cursor assist mode. The selection tool will appear above your finger. Drag the selection tool over the desired item.



Creating a waypoint

The waypoint will be positioned at the cursor when the cursor is active. When the cursor is not active, the waypoint will be positioned at your current location.

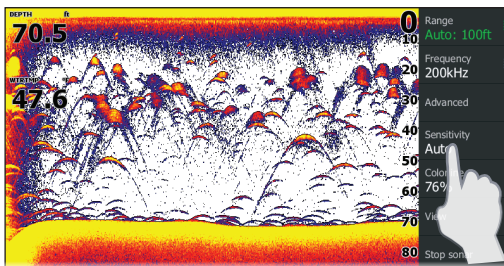


→ **Note:** Press the dedicated waypoint key twice to quickly save a waypoint.

Sonar

Adjusting sonar settings

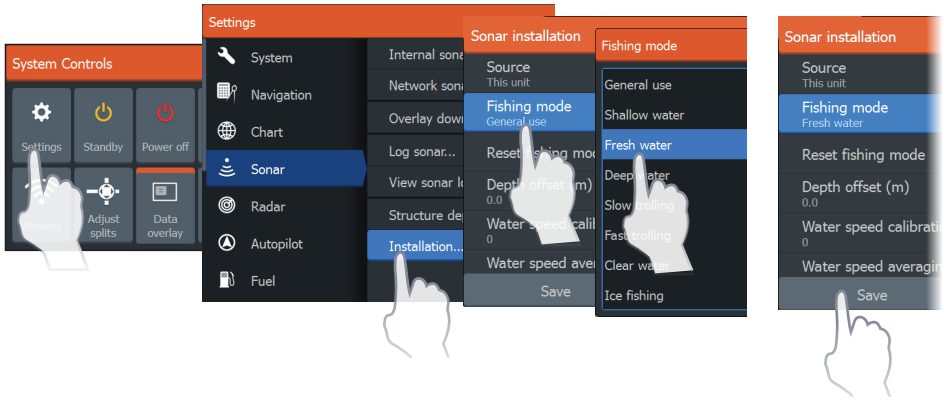
Sensitivity and Colorline are adjusted by dragging the slide bar vertically. The slide bar is accessed by tapping **Sensitivity** or **Colorline** on the Sonar menu.



Fishing modes

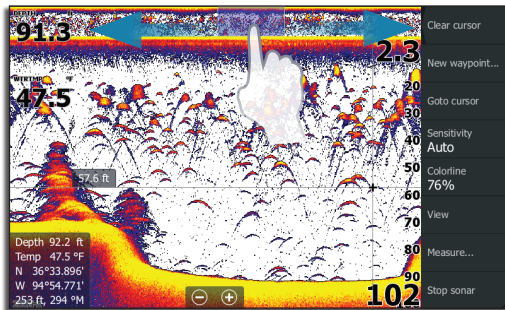
Consists of preset packages of sonar settings designed for specific fishing conditions.

→ **Note:** Use fresh water fishing mode when fishing in less than 60 feet of water.

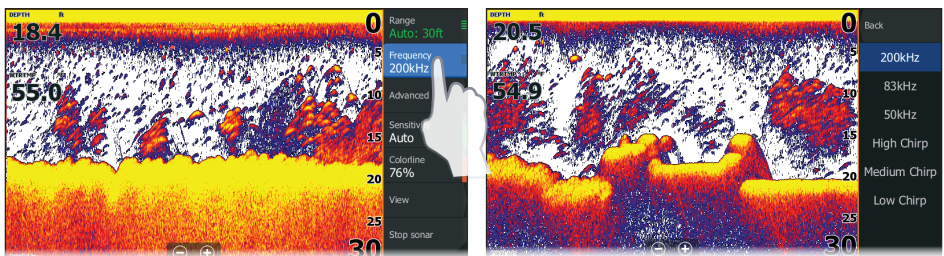


Viewing sonar history

Sonar history can be viewed by dragging your finger horizontally across the screen, or across the history preview bar, at the top of the screen.



Selecting a sonar frequency



→ **Note:** StructureScan® frequencies (800 kHz and 455 kHz) are selected from the Structure page frequency menu.