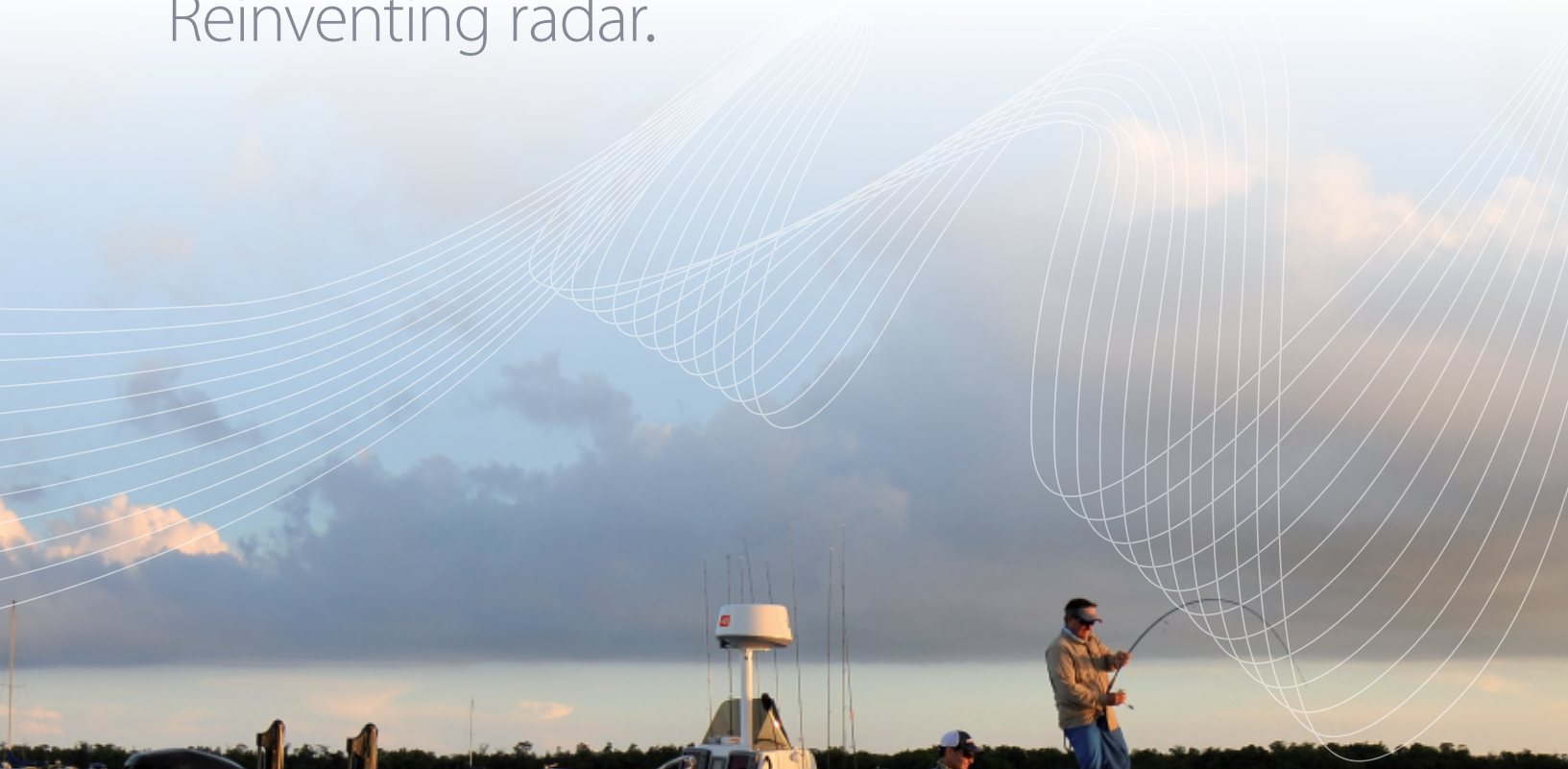


LOWRANCE®

**NEW
FOR 2012**

Broadband 4G™ Radar

Reinventing radar.



www.lowrance.com



Reinventing Radar

Lowrance has pioneered a new standard of dome radar, first with the award-winning BR24, and more recently with the Broadband 3G™ Radar. The latest innovation from Lowrance breaks even our high standards. Lowrance now offers two Broadband Radar™ choices; the outstanding Broadband 3G Radar and the brand-new, truly exceptional Broadband 4G™ Radar.

Sharpen Your View

Forget everything you thought you knew about radar. The Broadband 4G Radar reinvents the standard, transforming the way you'll navigate for good. Beam Sharpening technology allows for twice the target separation resolution of a standard 18-inch pulse dome. And with 50-percent more range than the Broadband 3G Radar and superior target detection, Broadband 4G Radar delivers the ultimate in navigational safety.

Plug & Play

Lowrance Broadband Radar models are compatible with all Lowrance HDS® multifunction displays. Simply plug your Broadband Radar into a 5-, 7-, 8- or 10-inch HDS for an immediate heightened sense of situational awareness.



◀ View razor-sharp, easy-to-interpret radar images on your HDS multifunction display.



LOWRANCE®

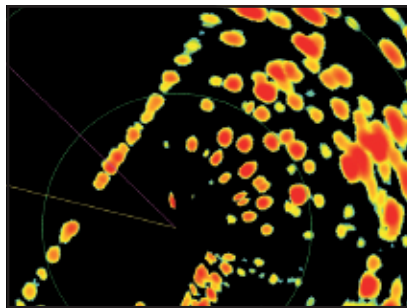
Broadband 4G™ Radar

High-res, near and far...

» **NEW** Beam Sharpening

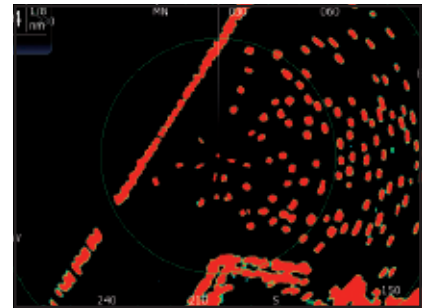
View razor-sharp images at every range with Broadband 4G Radar - similar to a 3.5-foot open array pulse radar.

4 kW Pulse Radar



Inferior separation of docks, boats and moored vessels.

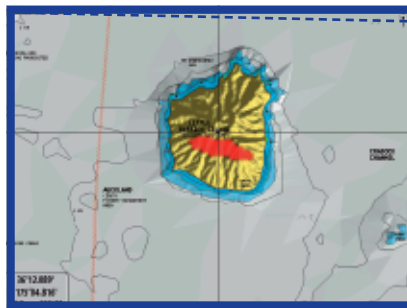
Broadband 4G Radar



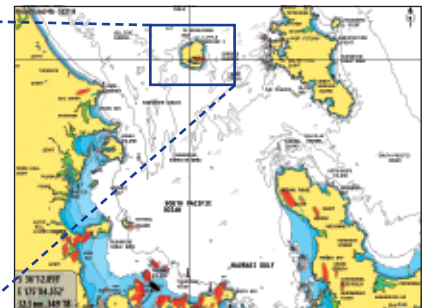
Superior short-range target discrimination clearly shows docks, boats and moored vessels.

» **NEW** More Range

50-percent more true range than Broadband 3G Radar. Now you can see crystal-clear targets up to 32 nautical miles away and inside storm cells more than 17 nautical miles away.



Little Barrier Island clearly seen zoomed in over 32 nautical miles away with Broadband 4G Radar.



Both Omaha Beach and Little Barrier Island in New Zealand are seen at over 32 nautical miles away by Broadband 4G Radar.

» **NEW** **High-Speed Mode** - Select 36 RPM for instant updating at less than 1 nautical mile.

» **Unrivalled Short Range** - Outstanding performance where it matters most, within 200 feet (zero main bang).

» **MARPA Target Tracking** - Track up to 10 targets as standard.

» **Dual Guard Zones** - Protect yourself from more angles.

» **Automatic Clarity** - Proven auto harbor and offshore modes including directional clutter rejection.

» **Extremely Low Emissions** - Safer than any other radar currently on the market and emitting less radiation than a mobile phone – allowing it to be mounted anywhere.

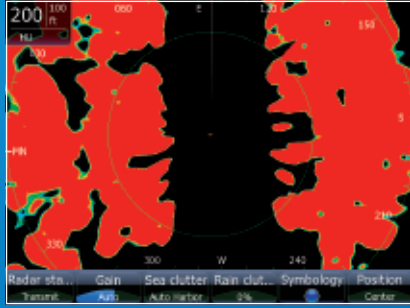
» **InstantOn™ Viewing** - Produces immediate and accurate on-screen images.

» **Low Power Consumption** - Ideal for recreational boats of any size.

» **Quick Installation** - No reason to open the dome, no tune or zero-mile adjustment, and no radar-licensed technician required.

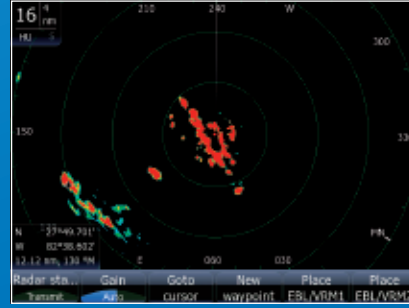


» Unrivalled Short Range



Two individual boats are seen on the right in two small bays on 200-foot scale.

» Weather Detection



When using Broadband 4G Radar, a powerful storm greater than 12 nautical miles away is displayed on a Lowrance HDS with multiple gradient colors

» Broadband 4G Radar Technical Specifications

General	
Compliance	FCC/IC/R&TTE FCC ID: RAY3G4G IC ID: 4697A-3G4G Human Exposure General Public Safety Limit - touch dome anywhere
Environmental	IEC60945:2002 Operating temperature: -13° to +130° F/-25° to +55°C Relative humidity: +95°F/+35°C, 95% RH Waterproof: IPX6
Relative Wind Velocity	51 m/sec (Max:100 Knots)
Power Consumption	Operating: 20W (Typ.) @ 13.8 vDC Standby: 2.9W (Typ.) @ 13.8 vDC
DC Input (at end of radar cable)	9 to 31.2 vDC (12/24 Volt systems) Reverse polarity protection Minimum start-up voltage 10.8 vDC
Transmitter Source (pre-heating time)	No magnetron - Instant On™
Outside Dimensions	Height: 11.02 in/280 mm Diameter: 19.28 in/488 mm
Weight (no cable)	16.3 lb/7.4 kg
Radar and Antenna Parameters	
Radar Ranges	200 ft/50 m to 36 nm/66 km with 18 range settings (nm/sm/km)
Rotation	24/36 RPM +/- 10%; (mode dependent)
Transmitter Frequency	X-band - 9.3 to 9.4 GHz
Transmitter Source (warm-up time)	No Magnetron - all solid state InstantOn™ viewing

Radar and Antenna Parameters continued ...	
Plane of Polarization	Horizontal polarization
Transmitter Peak Power Output (at antenna port)	165 mW (nominal - at antenna port)
Main Bang Dead Zone & Tuning	None (not a pulse radar)
Sea and Rain Clutter	3-5 times less than a pulse radar
Sweep Repetition Frequency	200 - 540 Hz (mode dependant)
Sweep Time	1.3 ms +/- 10%
Sweep Bandwidth	75 MHz max
Horizontal Beam Width (Tx and Rx antenna)	5.2° +/- 10% (-3 dB width)
Effective Beam Width	2.6°
Vertical Beam Width (Tx and Rx antenna)	25° +/- 20% (-3 dB width)
Sidelobe Level (Tx and Rx antenna)	Below -18 dB (within ±10°) Below -24 dB (outside ±10°)
Noise Figure	Less than 6 dB
Coms/Cabling/Mounting	
Com Protocol	High-Speed Ethernet (100 Base-T)
Heading	NMEA 2000®/SimNet (with RI-10 interface box - included)
Inter-Connecting Cable Length	32.8 ft/10 m
Maximum Inter-Connecting Cable Length	98.4 ft/30 m (available option)
Bolts (4)	M8 x 30 - 304 stainless steel
Footprint	9.17 in/233 mm (port to starboard) 5.57 in/141.5 mm (bow to stern)

Navico Americas
12000 East Skelly Drive
Tulsa, OK 74128-2486 USA

PHOTO CREDIT: David McCleaf, Cover
Products, features and specifications are the most recent available and are subject to change without notice. No liability can be accepted for errors or omissions in this document. © 2011 Navico 1110

LOWRANCE®

www.lowrance.com

985-10435-001